



18/8 Westbury Street St Kilda East, VIC



2



1



1

## Stylish Bright Top Floor Retreat

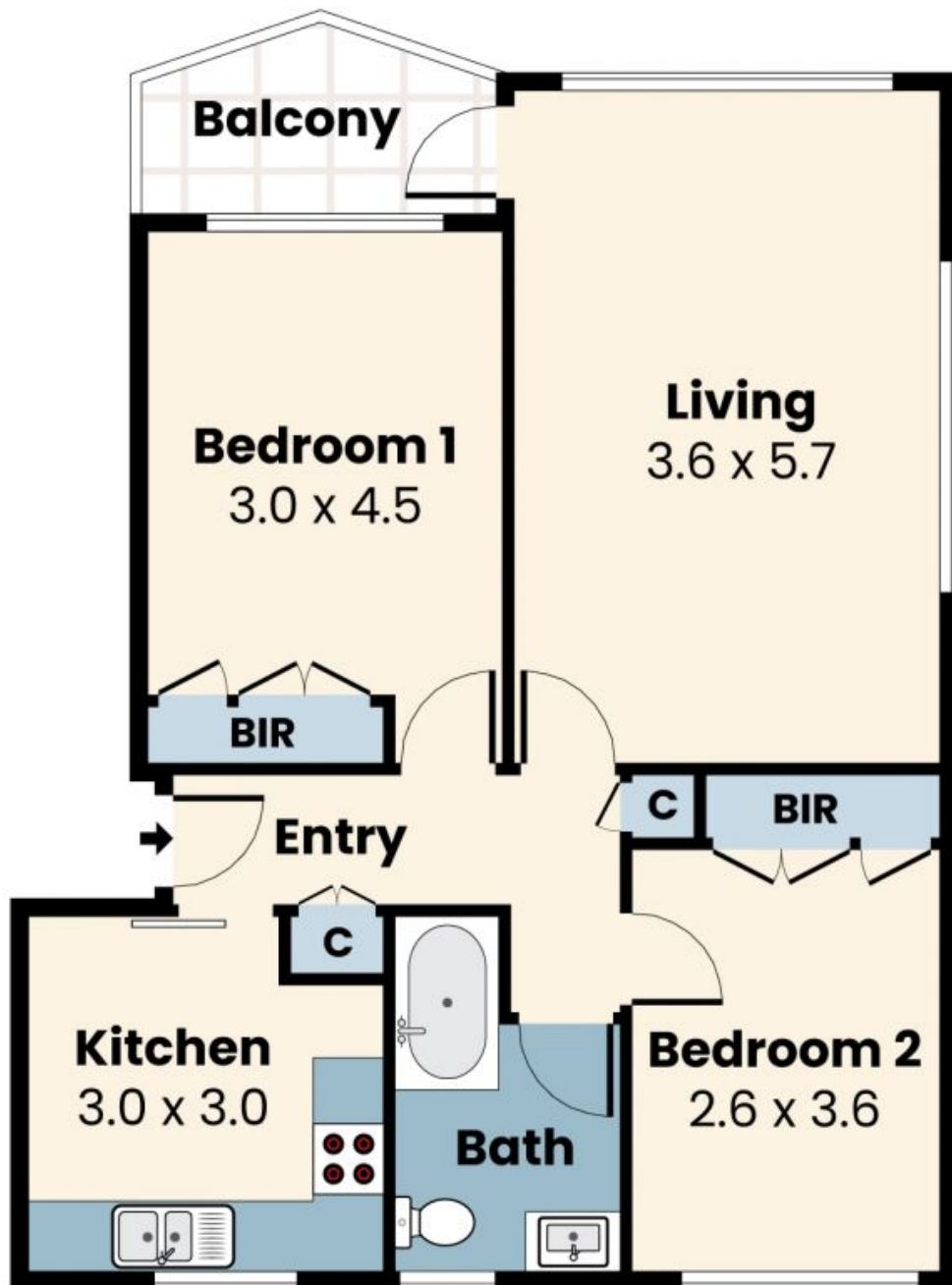
Recently updated this gorgeous looking late 1950's apartment enjoys fresh finishes a northern outlook and a north facing balcony off the lounge. Tucked away at the rear of the block this top floor apartment, is a brilliant buy for first home owners, investors or busy professionals and provides a peaceful and private inner city retreat. A large updated separate kitchen with stainless steel appliances which includes a dishwasher and abundant storage flows to a dining zone and light filled lounge opening out onto a charming balcony amidst a leafy canopy.

Two bedrooms with BIRs share their own zone with a tiled bathroom; the master bedroom offering generous king bed size, with solid internal walls and a treed outlook. Impeccable presentation, with a dedicated entry hall, "timber like floors

This instantly appealing apartment is just meters from local cafes, Alma Park and Dandenon

**John Kaufman**

0411801145



**18/8 Westbury Street, St Kilda East**

© Produced by PBloc Pty Ltd

This floorplan is for illustration purposes only and no warranty is given to its accuracy. Purchasers are advised to carry out their own investigations.