



## 172 George Street Fitzroy VIC

2  1 

A truly exceptional blend of past and present, this inspired double-storey Georgian terrace presents a rare opening in this fashionable quarter close to Smith, Gertrude and Brunswick Streets. At the end of a small attractive row, fronting mature plane trees, this character-filled home retains its exquisite original appeal, extending through a flexible floorplan framed by high ceiling roses and timber floorboards. Its original charm is enhanced by a light-filled interior with a contemporary style and clever appointments. The 2 bedroom accommodation is highlighted by spacious living, an entertainers' stone kitchen featuring a stone dining island, central bathroom upstairs, a powder room downstairs, gas heating and a delightful courtyard garden with a right of way from Webb Street to the courtyard. It is exceptionally positioned for ultra-convenience, the dining,

**Type** : House

**View** : <https://www.halfapercen.com.au/7578884>

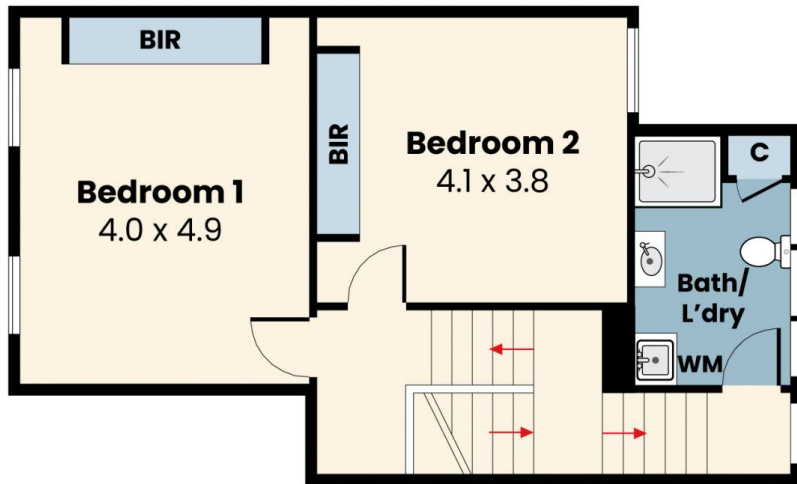


**Celeste Cuzzolin**  
0395271211

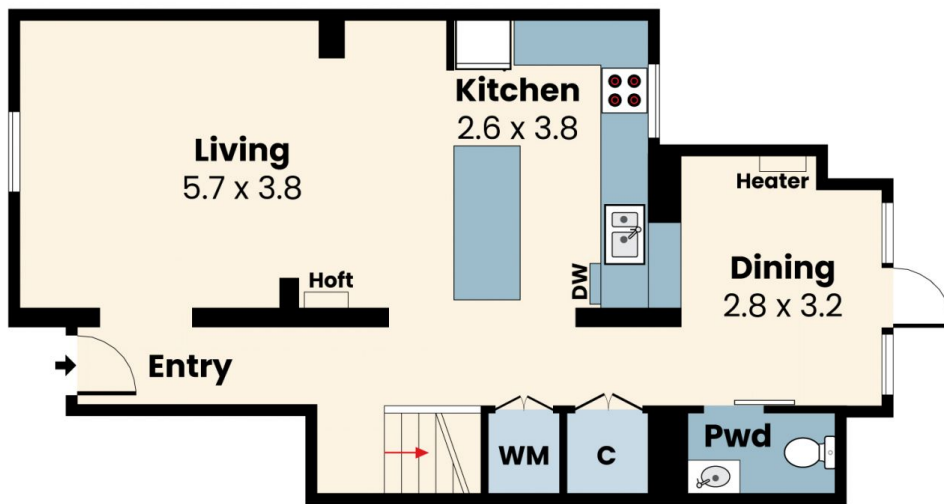


**John Kaufman**  
0395271211

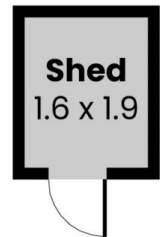
[For full version visit the website](https://www.halfapercen.com.au)



**First Floor**



**Ground Floor**



**Site Plan**



**172 George Street, Fitzroy**

© Produced by PBloc Pty Ltd

This floorplan is for illustration purposes only and no warranty is given to its accuracy. Purchasers are advised to carry out their own investigations.