

8/19 Ellesmere Road Windsor VIC

1 1 1

This light-filled first-floor apartment is ideally located close to Lumley Gardens and cosmopolitan Chapel Street lifestyle offering: Security entrance - Sun-drenched living and dining area - Separate kitchen with ample bench/cupboard space, stainless steel gas cooktop, a stainless steel oven, and dishwasher, double bedroom with built-in wardrobes & appealing picturesque outlooks, Bathroom with shower over a bath and laundry facilities. Bonuses include off-street car parking, and a location with local parks, transport, and High Street shops all so easily reached. This is one you do not want to miss out on.

Type : Apartment

View : <https://www.halfapercen.com.au/7624055>



Celeste Cuzzolin
0395271211

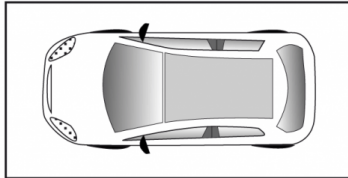


Susie Minski
0395271211

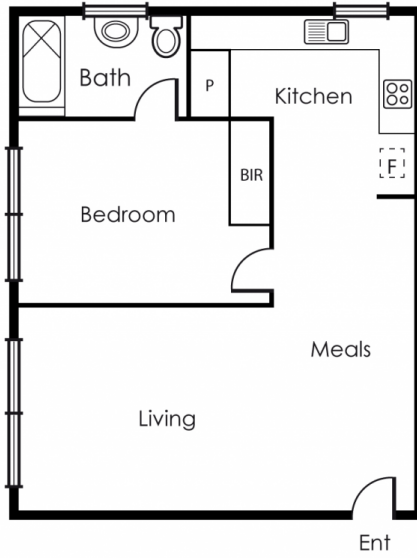
TO REGISTER

If you have found the property on realeste.com.au we ask

[For full version visit the website](https://www.halfapercen.com.au)



Carspace
(Not in position)



This floorplan is a guide only and no warranty is given to its accuracy in dimensions. Purchasers are advised to carry out their own investigations.