



3/2a Hertford Street St Kilda East VIC

2 1 1

This irresistible Art Deco apartment is located in a quiet cul-de-sac location, at the front of this boutique block of only eight. This spacious lifestyle apartment has classical character with refined renovated spaces making it irresistible. Sun drenched and exceptionally generous this first floor apartment features polished floorboards throughout, ornate ceilings, a large and light living area with reverse cycle heating and cooling, a separate kitchen/dining zone with stainless steel Blanco appliances and a full separate laundry.

The well-designed floor plan also offers two generous bedrooms, each with built in robes and a fully tiled central bathroom with bath, as well as excellent hall storage. A secure under cover car park and storage unit are included. Walk to Alma Village cafes and supermarket, Dandenong

Type : Apartment

View : <https://www.halfapercen.com.au/7743342>



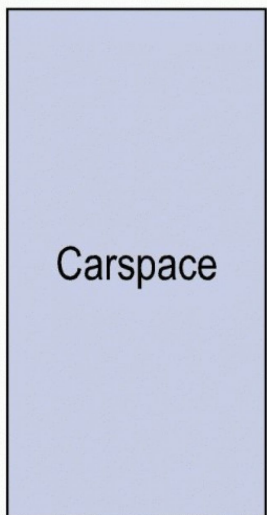
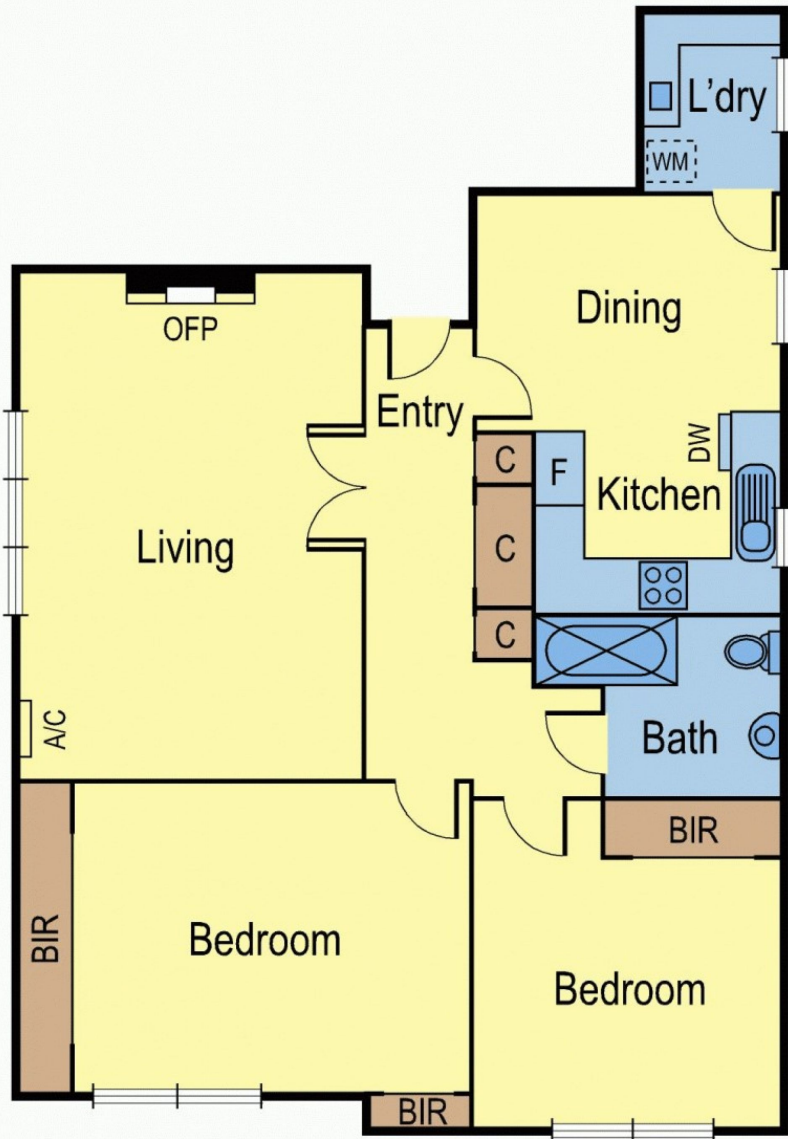
Susie Minski
0395271211



Celeste Cuzzolin
0395271211

[For full version visit the website](https://www.halfapercen.com.au)

3/2A Hertford Street, St Kilda East



(Not In Position)