



3/16 Lansdowne Road St Kilda East VIC

2 1 1

This first-floor two bedroom north-facing apartment with balcony and secure car space offers is located in a quiet, wide tree-lined street minutes' walk from shops and trams. Featuring a huge living & dining room with oversized window opening onto a north-facing balcony, gas kitchen with good storage including overhead cupboards and room to eat, two spacious bedrooms with built-in robes, modern bathroom, with bath & standalone shower, laundry taps, & separate toilet. Bonuses include, a secure car space, dishwasher, Split system in the lounge & timber floors throughout. The location is convenient to buses trains and trams, Alma Village, parks and Carlisle Street, while being close to the Chapel Street Precinct and Armadale and Malvern's shops and eateries.

Type : Apartment

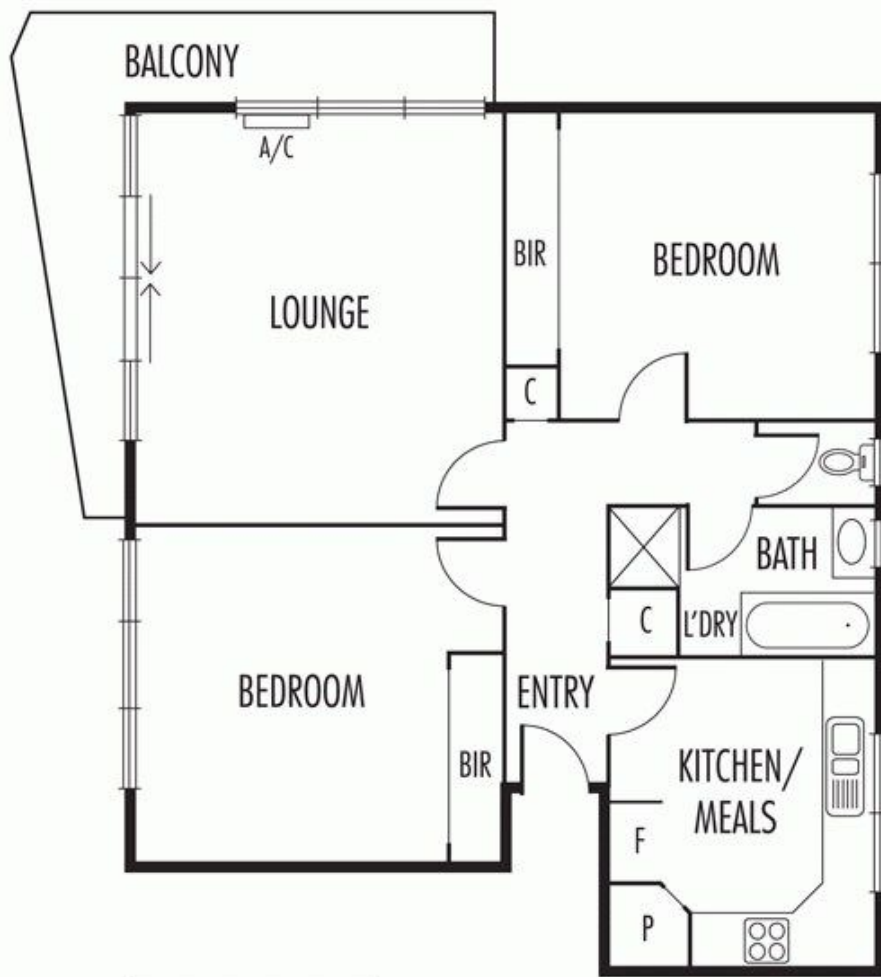
View : <https://www.halfapercen.com.au/7790771>



Celeste Cuzzolin
0395271211



Susie Minski
0395271211



CARSPACE
(NOT IN POSITION)

